

This document has been translated by computer. So the translation may not reflect the original precisely.

(11)[Registration number]

D1671773

(73)[Owner of a design right]

FAST RETAILING CO., LTD.

(55)[Description of article to the design]

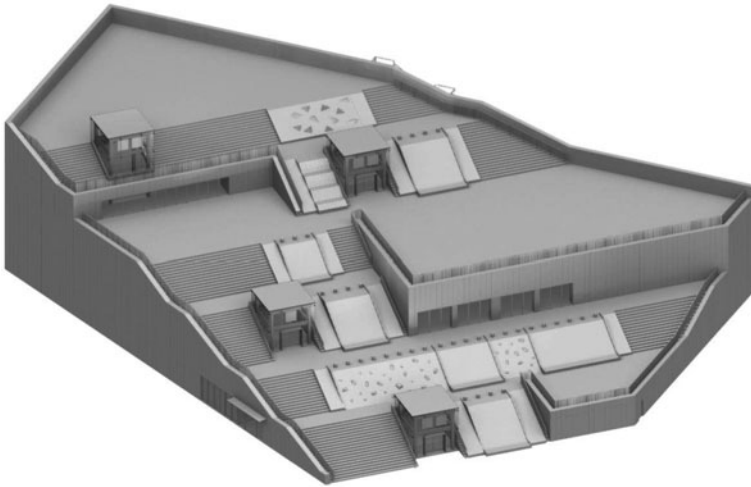
The outdoor part which makes form which leveled the inside on the ground from the roof as a store which sells clothing etc. is used for this building as play space, break space, etc.

(55)[Description of the design]

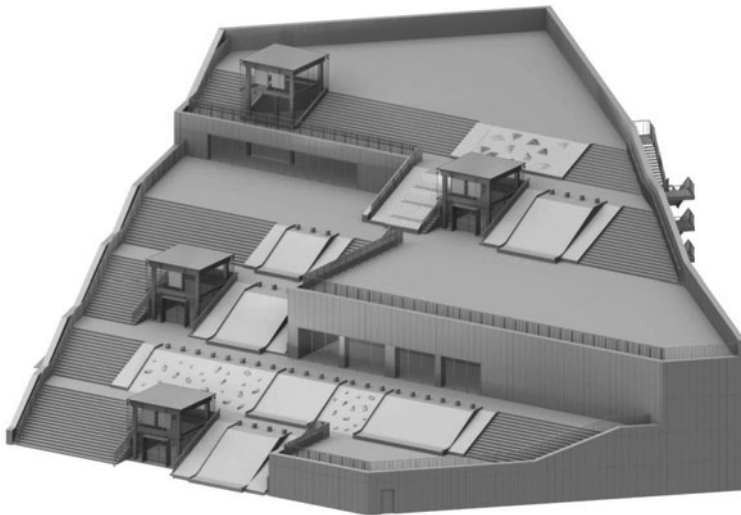
The shade expressed on the surface of Drawings is a shade showing the form on the surface of solid. In "the reference perspective view showing the area pellucida", and "the reference left side view showing the area pellucida", it is blue and the colored portion is transparent.

[Drawings]

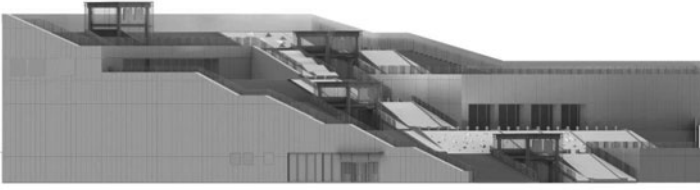
[Perspective view 1]



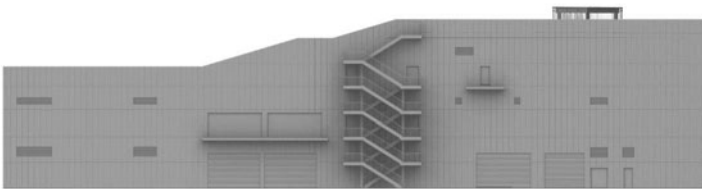
[Perspective view 2]



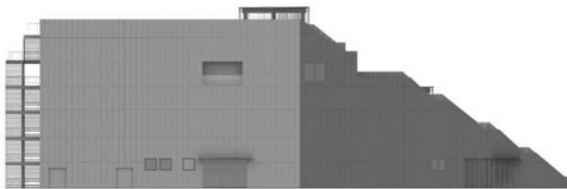
[Front view]



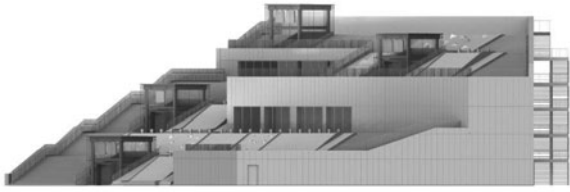
[Rear view]



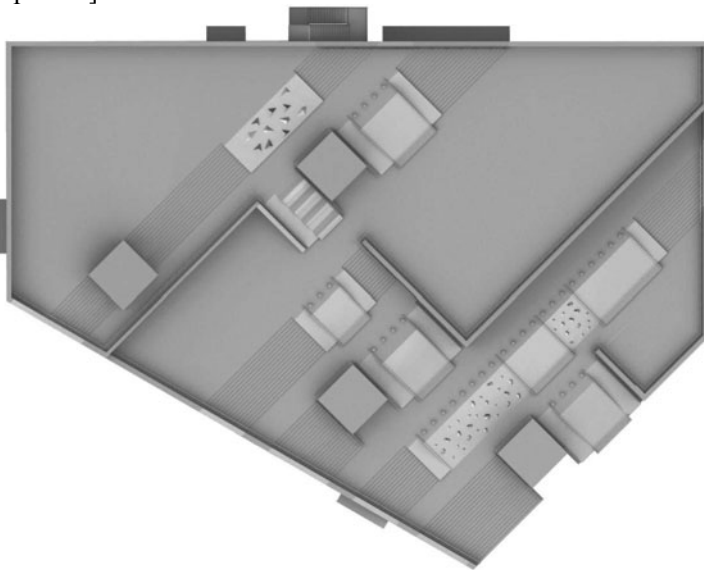
[Left side view]



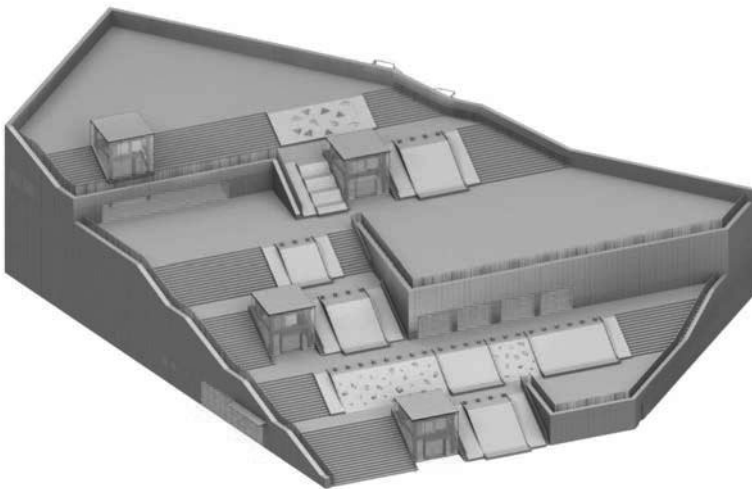
[Right side view]



[Top view]



[The reference perspective view showing the area pellucida]



[The reference left side view showing the area pellucida]



[Example reference imaged figure]



This document has been translated by computer. So the translation may not reflect the original precisely.

(11)[Registration number]

D1671774

(73)[Owner of a design right]

[Name]

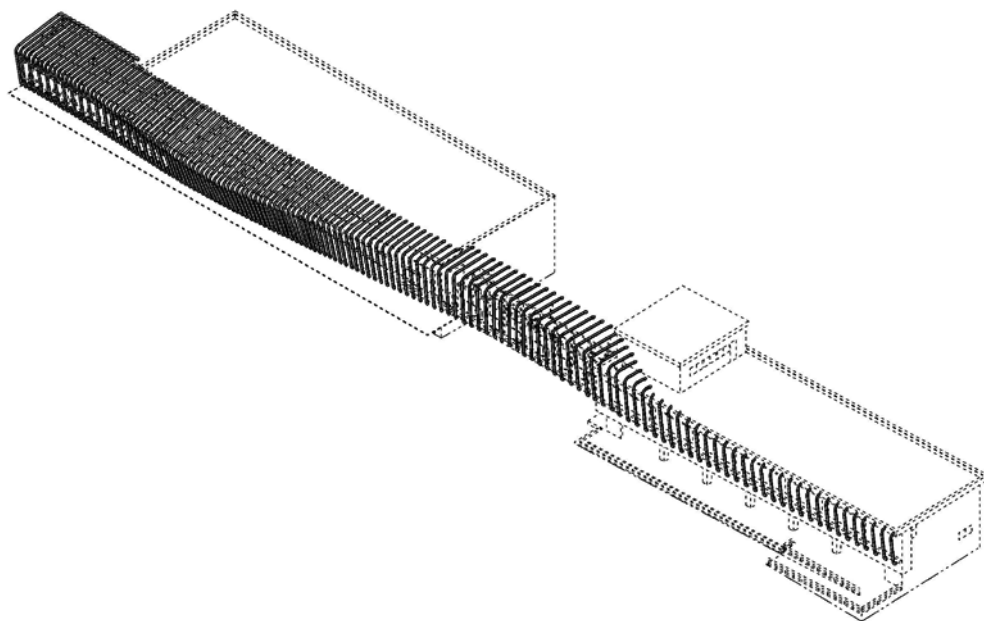
East Japan Railway Company

(55)[Description of the design]

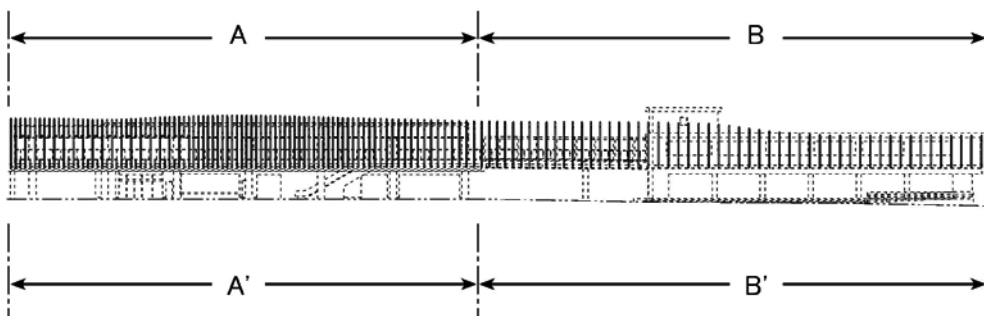
The portion denoted by the solid line is the part for which the design registration is requested as a Partial design. The part for which the design registration is requested including a perspective view and each enlarged drawing are specified. A dash-dotted line is a line which shows only the boundary of the portion which is granted design registration as a Partial design, and it makes like, and other portions, and a * dotted line is a line which shows only the boundary of the portion and ground part which are granted design registration as a Partial design, and it makes like. The portion denoted by the dotted line is right an unrequired portion. A bottom view is omitted per heavy lift.

[Drawings]

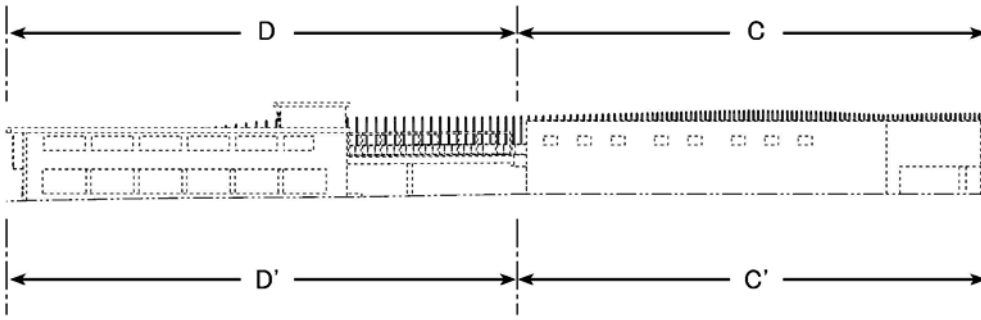
[Perspective view]



[Front view]



[Rear view]



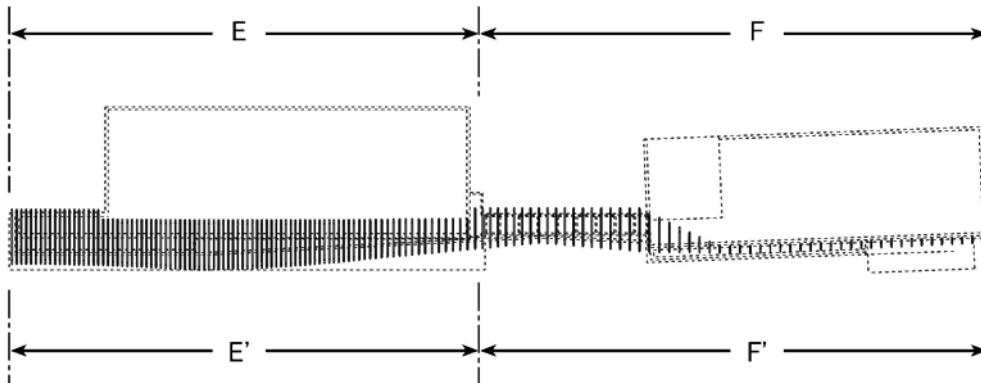
[Left side view]



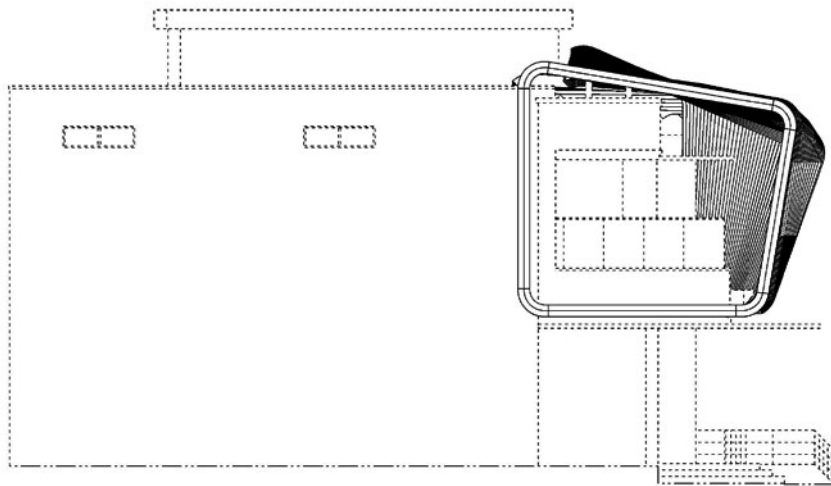
[Right side view]



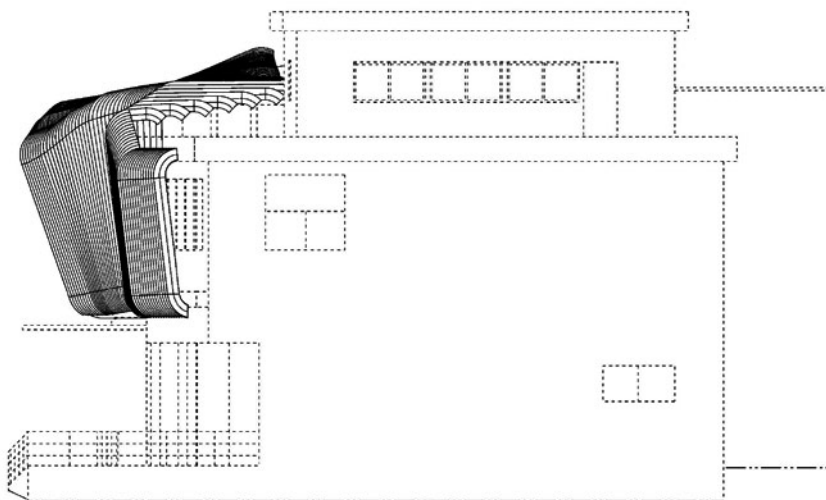
[Top view]



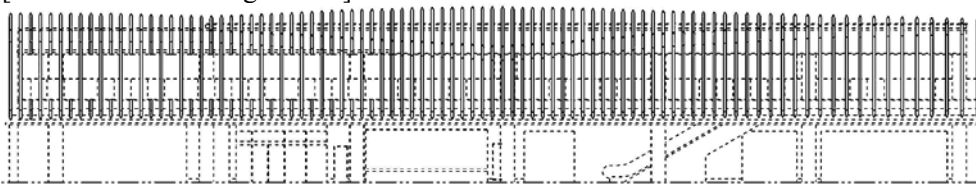
[Expansion left side view]



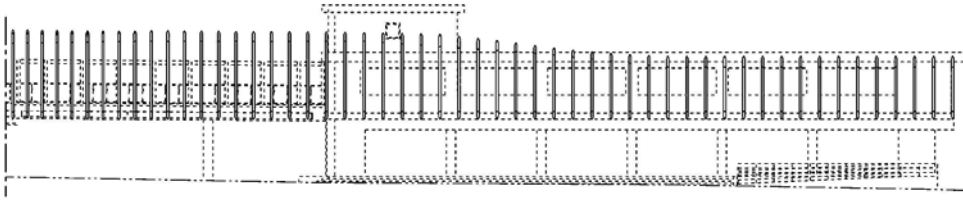
[Expansion right side view]



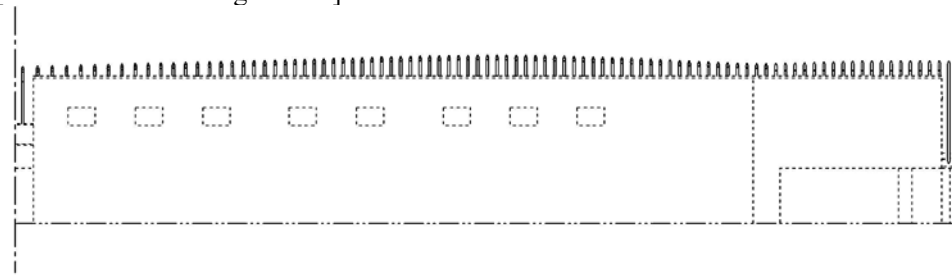
[A-A' elements on larger scale]



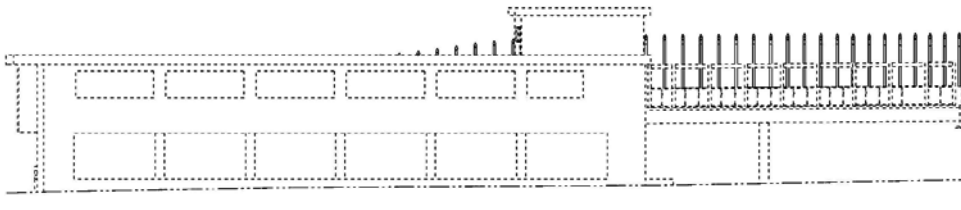
[B-B' elements on larger scale]



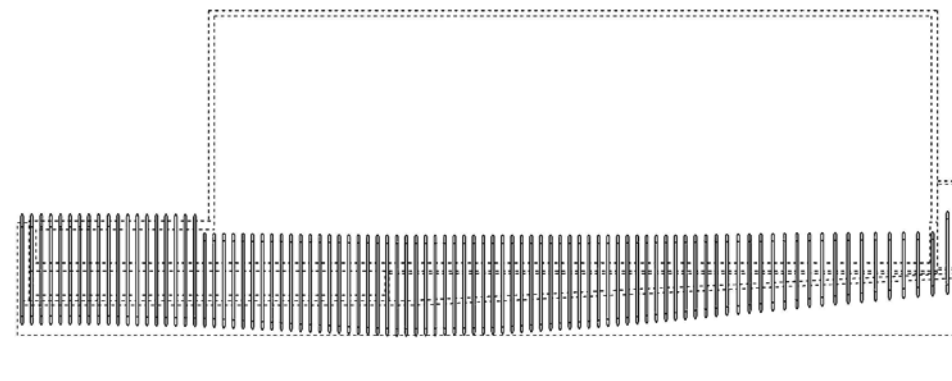
[C-C' elements on larger scale]



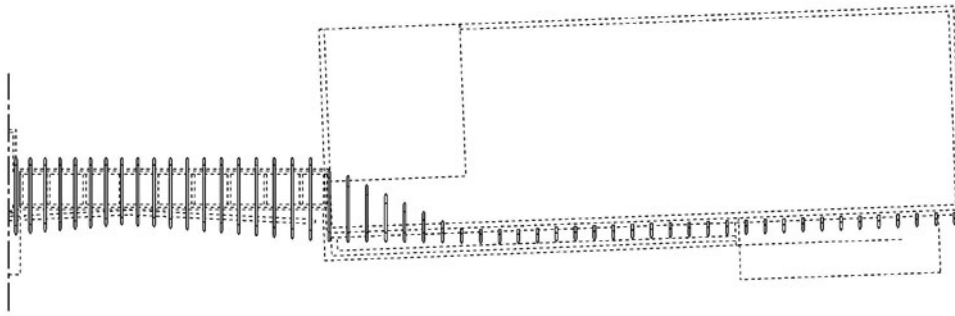
[D-D' elements on larger scale]



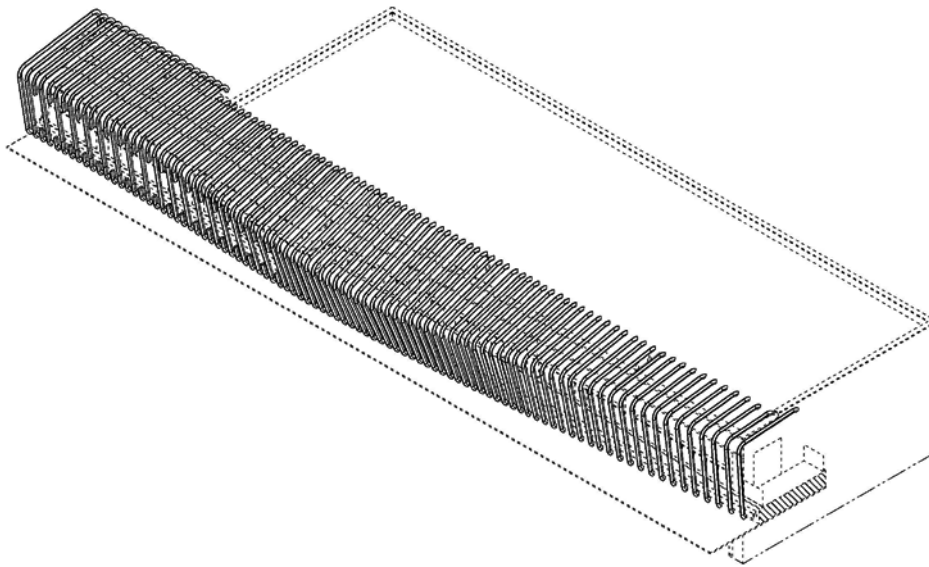
[E-E' elements on larger scale]



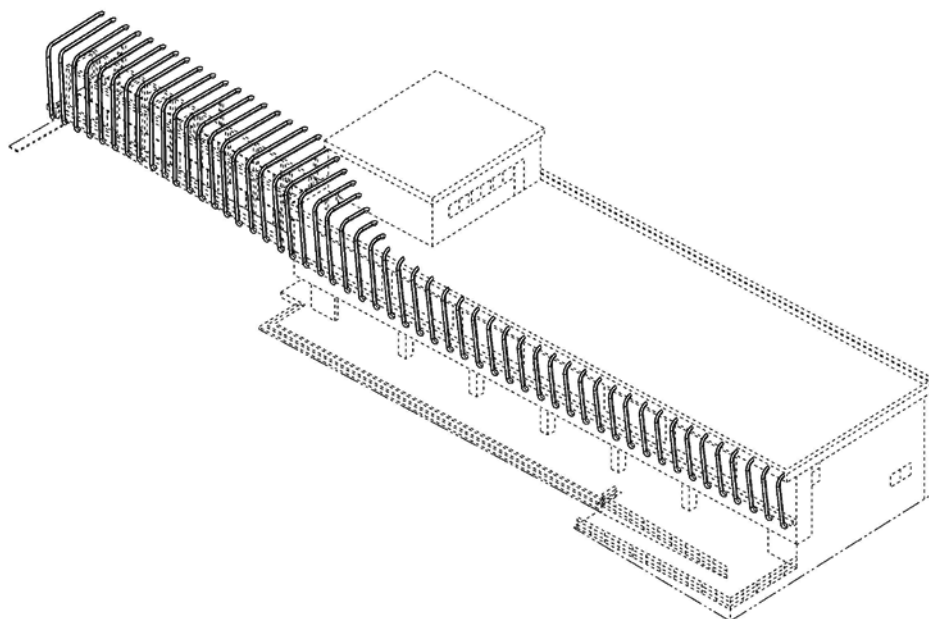
[F-F' elements on larger scale]



[A-A' section partial expansion perspective view]



[B-B' section partial expansion perspective view]



This document has been translated by computer. So the translation may not reflect the original precisely.

(11)[Registration number]

D1671153

(73)[Owner of a design right]

[Name]

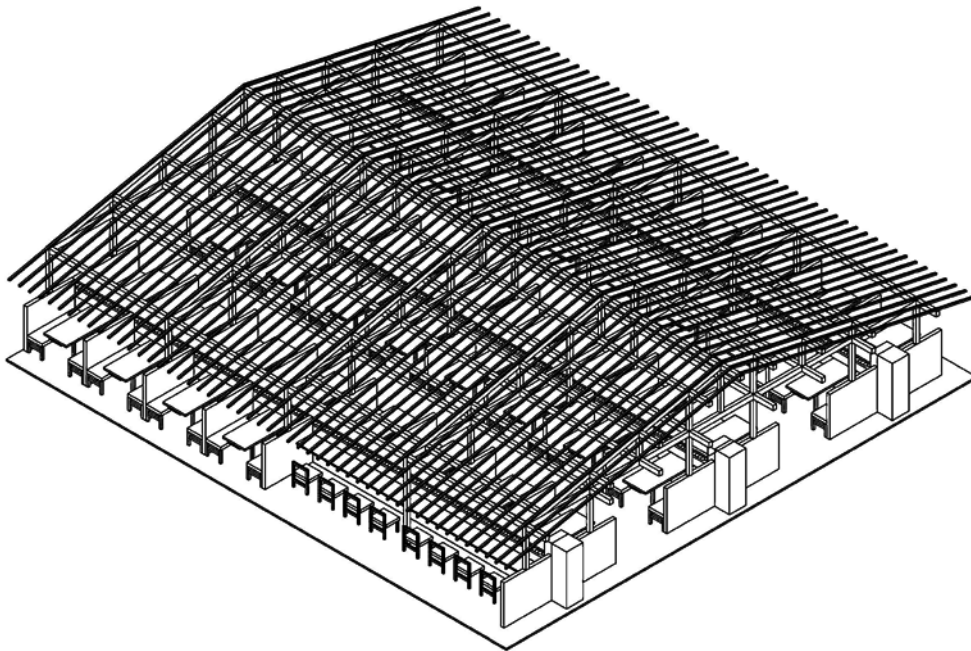
* sushi incorporated company

(55)[Description of the design]

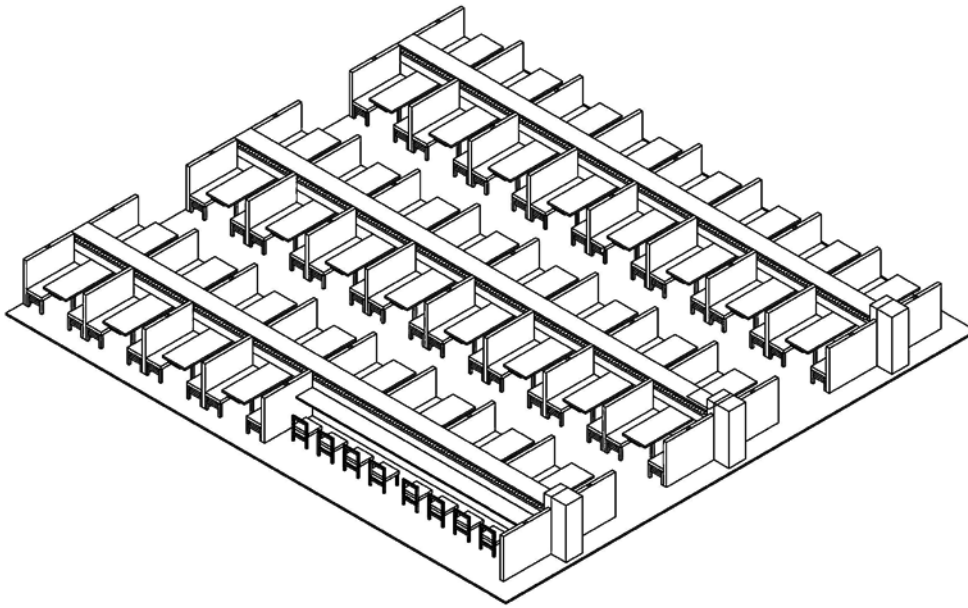
The design of this Application for design registration is a design of the inner package of a revolving sushibar, and consists of composition which has arranged the desk, the chair, the partition, and the revolving sushi conveying machine under the loop clip which consists of a support and a roof.

[Drawings]

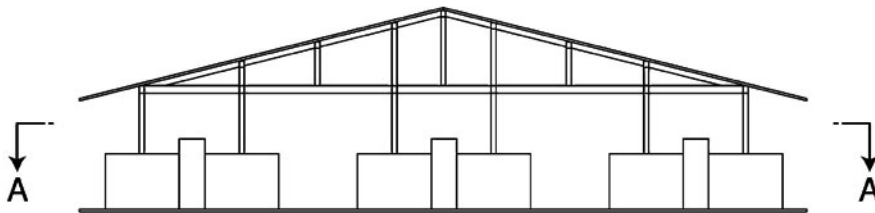
[Perspective view]



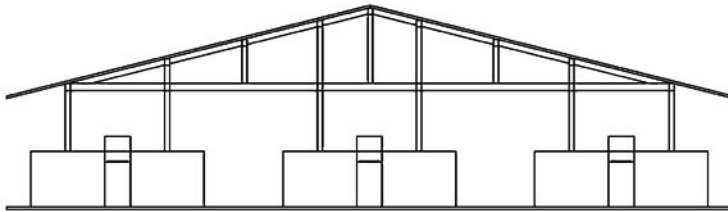
[The perspective view in the state where the loop clip was removed]



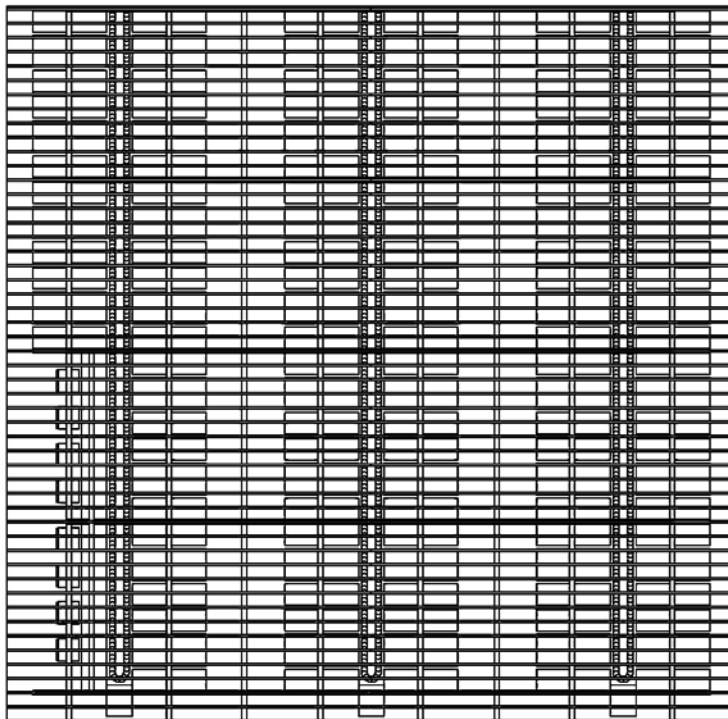
[Front view]



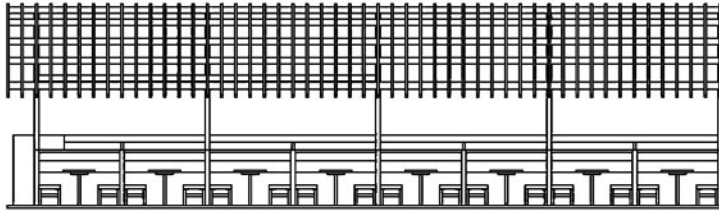
[Rear view]



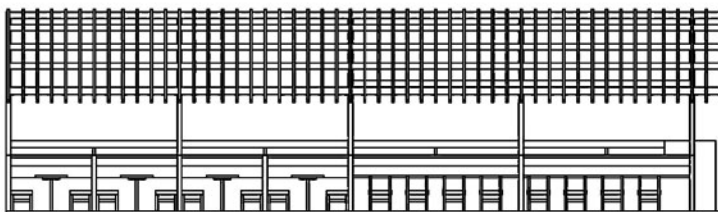
[Top view]



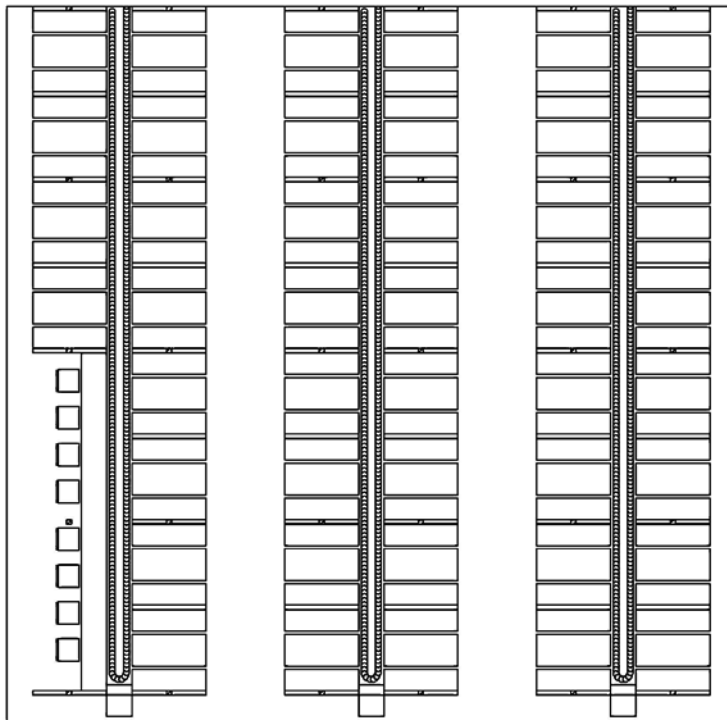
[Right side view]



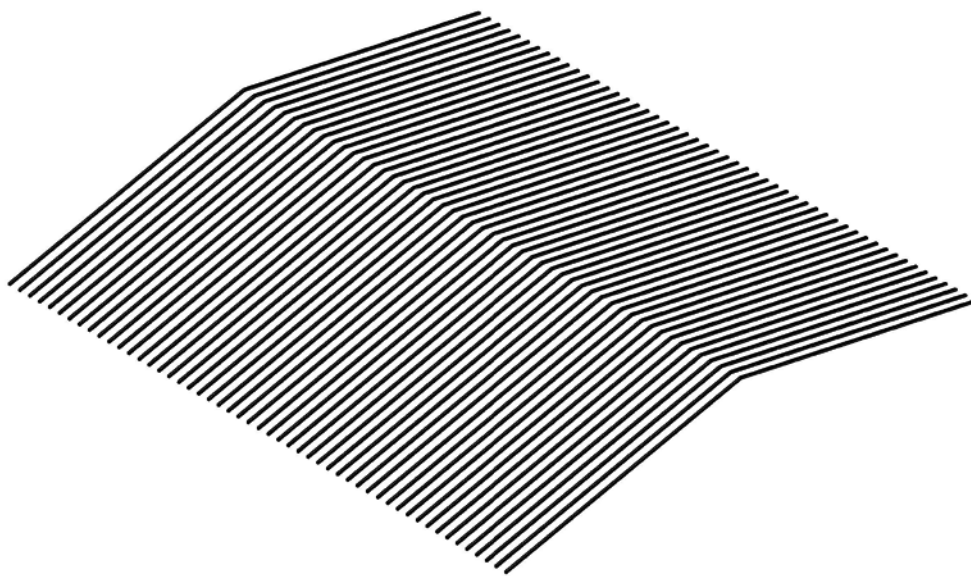
[Left side view]



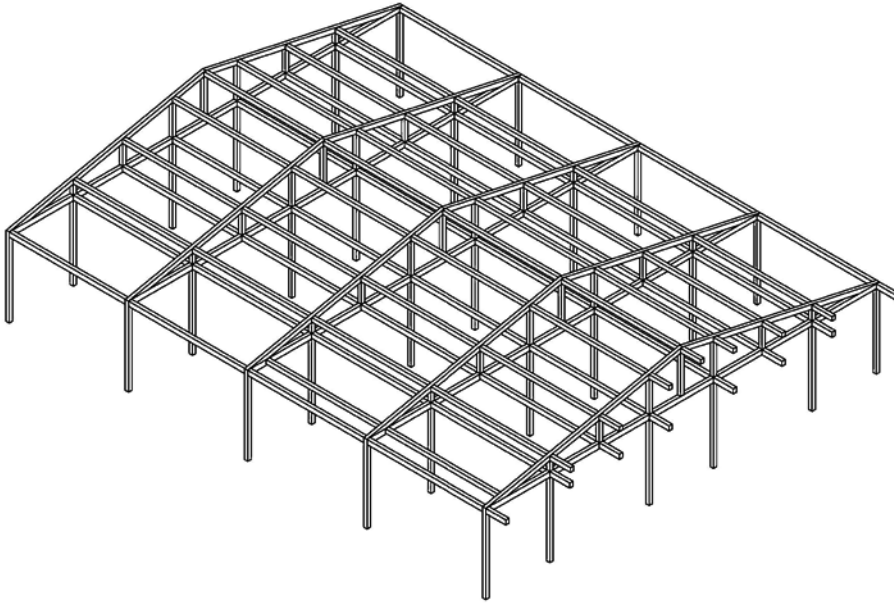
[A-A line cross sectional view]



[The reference perspective view of the roof part of a loop clip]



[The reference perspective view of the support part of a loop clip]



[Features of the design]

[An applicant's description is published as it is and the Patent Office has not examined about the contents.]

The Design in the Application builds the loop clip which consists of a support and a roof to indoor [of the store of a revolving sushibar], and the characteristics are that it has arranged the desk, the chair, the partition, and the revolving sushi conveying machine with sufficient balance to the bottom of it.